

## 1. Lernphase Seite 2-6

### Seite 3

Siehe Angaben zu den Lizenzen an den Skelettabbildungen

Foto zu A3: aus einer wissenschaftlichen Originalpublikation; Quelle unbekannt

### Seite 4

Siehe Angaben zu den Lizenzen an den Skelettabbildungen

### Seite 5

Siehe Angaben auf den folgenden sechs Seiten



# File:Laetoli footprints replica.jpg

Wikimedia Commons auf Deutsch

From Wikimedia Commons, the free media repository



Size of this preview: 800 × 349 pixels.

Original file (2,672 × 1,164 pixels, file size: 2.48 MB, MIME type: image/jpeg); ZoomViewer: [flash](#)/[no flash](#)

[Open in Media Viewer](#)

[File information](#)   [Structured data](#)

**Captions**

[Edit](#)

English

[Add a one-line explanation of what this file represents](#)

## Summary

<b>Description</b>	<b>日本語:</b> ラエトリの猿人足跡化石 (レプリカ)。国立科学博物館の展示。 <b>English:</b> Laetoli footprints, replica. Exhibit in the <a href="#">National Museum of Nature and Science, Tokyo, Japan</a> .
<b>Date</b>	16 February 2013
<b>Source</b>	Own work
<b>Author</b>	<a href="#">Momotarou2012</a>

## Licensing

I, the copyright holder of this work, hereby publish it under the following license:

This file is licensed under the Creative Commons Attribution-Share Alike 3.0 Unported (<https://creativecommons.org/licenses/by-sa/3.0/deed.en>) license.

You are free:

- **to share** – to copy, distribute and transmit the work
- **to remix** – to adapt the work

Under the following conditions:

- **attribution** – You must give appropriate credit, provide a link to the license, and indicate if changes were made. You may do so in any reasonable manner, but not in any way that suggests the licensor endorses you or your use.
- **share alike** – If you remix, transform, or build upon the material, you must distribute

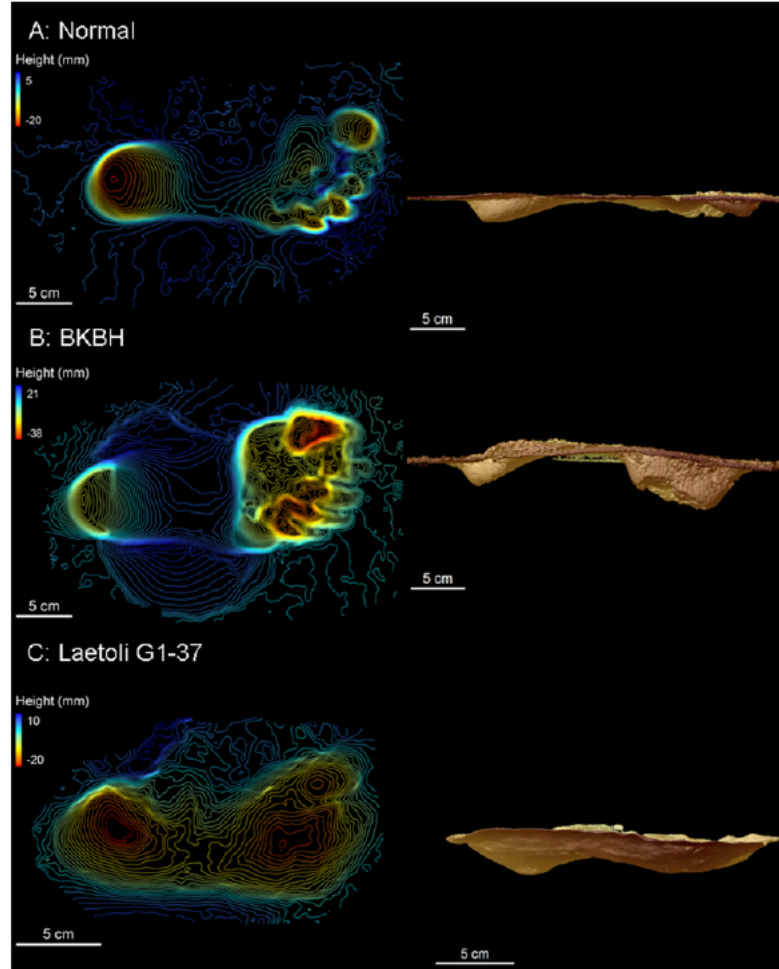




# File:Laetoli footprints.png

Wikimedia Commons auf [Deutsch](#)

From Wikimedia Commons, the free media repository



Size of this preview: [480 × 599 pixels](#).

[Original file](#) (1,511 × 1,885 pixels, file size: 1.46 MB, MIME type: image/png)

[Open in Media Viewer](#)



[Download all sizes](#)



[Use this file on the web](#)



[Use this file on a wiki](#)



[Email a link to this file](#)



[Information about reusing](#)



**File information****Structured data**

<b>Captions</b>	<b>Edit</b>
English	Add a one-line explanation of what this file represents

## Summary

<b>Description</b>	<p><b>English: Three dimensional scans of experimental footprints and a Laetoli footprint</b></p> <p>Contours are 1 <u>mm</u>.</p> <p>A) Contour map of modern human footprint (Subject 6) walking with a normal, extended limb gait and side view of normal, extended limb footprint.</p> <p>B) Contour map of modern human footprint (Subject 6) walking with a BKBH gait and side view of BKBH print.</p> <p>C) Contour map of <u>Laetoli footprint</u> (G1-37) and side view of Laetoli footprint (G1-37). Note the difference in <u>heel</u> and <u>toe</u> depths between modern humans walking with extended <u>and</u> BKBH gaits. Laetoli has similar toe relative to heel depths as the modern human extended limb print.</p> <p><b>Español: Comparación de exploraciones tridimensionales de huellas experimentales con las del yacimiento de Laetoli</b></p> <p>Las curvas representan una separación de 1 <u>mm</u>.</p> <p>A) mapa de contornos de una huella humana moderna (del sujeto nº 6 en el experimento para el que se efectuó este artículo), que marcha con un miembro inferior normal en extensión, y vista lateral de una pisada extendida y normal del miembro.</p> <p>B) Mapa de contornos de una pisada moderna (sujeto 6) con marcha BKBH (bent knee, bent hip, es decir, col la cadera y la rodilla dobladas)</p> <p>C) Mapa de contornos de la huella G1-37 de <u>Laetoli</u>. Obsérvese la diferencia en las profundidades del talón y <u>dedos</u> entre los humanos modernos caminando con los dos tipos de marcha (extendida y BKBH). En el caso de Laetoli se observa profundidades relativas de dedos a talón similares a una marcha actual humana normal</p> <p><b>Polski: Trójwymiarowe skany śladów stóp współczesnych ludzi oraz <u>śladów</u> stóp z Laetoli.</b></p>
<b>Date</b>	22 March 2010
<b>Source</b>	Raichlen DA, Gordon AD, Harcourt-Smith WEH, Foster AD, Haas WR Jr (2010) Laetoli Footprints Preserve Earliest Direct Evidence of Human-Like Bipedal Biomechanics. PLoS ONE 5(3): e9769. doi:10.1371/journal.pone.0009769.g001

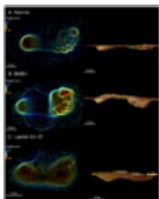
(<https://doi.org/10.1371%2Fjournal.pone.0009769.g001>)

<b>Author</b>	Raichlen DA, Gordon AD, Harcourt-Smith WEH, Foster AD, Haas WR Jr	
<b>Permission (Reusing this file)</b>	<div style="border: 1px solid black; padding: 10px;"> <p style="text-align: center;">This file is licensed under the <a href="https://creativecommons.org/licenses/by/2.5/deed.en">Creative Commons Attribution 2.5 Generic</a> (<a href="https://creativecommons.org/licenses/by/2.5/deed.en">https://creativecommons.org/licenses/by/2.5/deed.en</a>) license.</p> <hr/> <p>You are free:</p> <ul style="list-style-type: none"> <li>▪ <b>to share</b> – to copy, distribute and transmit the work</li> <li>▪ <b>to remix</b> – to adapt the work</li> </ul> <p>Under the following conditions:</p> <ul style="list-style-type: none"> <li>▪ <b>attribution</b> – You must give appropriate credit, provide a link to the license, and indicate if changes were made. You may do so in any reasonable manner, but not in any way that suggests the licensor endorses you or your use.</li> </ul> </div>	

Contours are 1 mm. A) Contour map of modern human footprint (Subject 6) walking with a normal, extended limb gait and side view of normal, extended limb footprint. B) Contour map of modern human footprint (Subject 6) walking with a BKBH gait and side view of BKBH print. C) Contour map of Laetoli footprint (G1-37) and side view of Laetoli footprint (G1-37). Note the difference in heel and toe depths between modern humans walking with extended and BKBH gaits. Laetoli has similar toe relative to heel depths as the modern human extended limb print.

## File history

Click on a date/time to view the file as it appeared at that time.

	Date/Time	Thumbnail	Dimensions	User	Comment
current	<a href="#">15:24, 22 March 2010</a>		1,511 × 1,885 (1.46 MB)	<a href="#">Ag.Ent (talk   contribs)</a>	{{Information  Description={{en1=Three dimensional scans of experimental footprints and a Laetoli footprint.}} {{pll1=Trójwymiarow skany śladów stóp współczesnych ludzi oraz śladów stóp z Laetoli.}}  Source=Bois

---

source=naic

- You cannot overwrite this file.

## File usage on Commons

---

The following 2 pages uses this file:

- [Commons:Open Access File of the Day/2012](#)
- [File:Laetoli footprints2.png](#) (file redirect)

## File usage on other wikis

---

The following other wikis use this file:

- Usage on [de.wikipedia.org](#)
  - [Biomechanik](#)
  - [Laetoli](#)
- Usage on [en.wikipedia.org](#)
  - [Laetoli](#)
- Usage on [es.wikipedia.org](#)
  - [Hallux](#)
- Usage on [fr.wikipedia.org](#)
  - [Laetoli](#)
- Usage on [he.wikipedia.org](#)
  - [אוסטרלופיתקוס](#)
- Usage on [nl.wikipedia.org](#)
  - [Laetoli](#)
- Usage on [pl.wikipedia.org](#)
  - [Ślady stóp z Laetoli](#)

## Metadata

---

This file contains additional information such as Exif metadata which may have been added by the digital camera, scanner, or software program used to create or digitize it. If the file has been modified from its original state, some details such as the timestamp may not fully reflect those of the original file. The timestamp is only as accurate as the clock in the camera, and it may be completely wrong.

---

Retrieved from "[https://commons.wikimedia.org/w/index.php?title=File:Laetoli\\_footprints.png&oldid=113219995](https://commons.wikimedia.org/w/index.php?title=File:Laetoli_footprints.png&oldid=113219995)"

---

This page was last edited on 4 January 2014, at 12:22.

Files are available under licenses specified on their description page. All structured data from the file and property namespaces is available under the [Creative Commons CC0 License](#); all unstructured text is available under the [Creative Commons Attribution-ShareAlike License](#); additional terms may apply. By using this site, you agree to the [Terms of Use](#) and the [Privacy Policy](#).

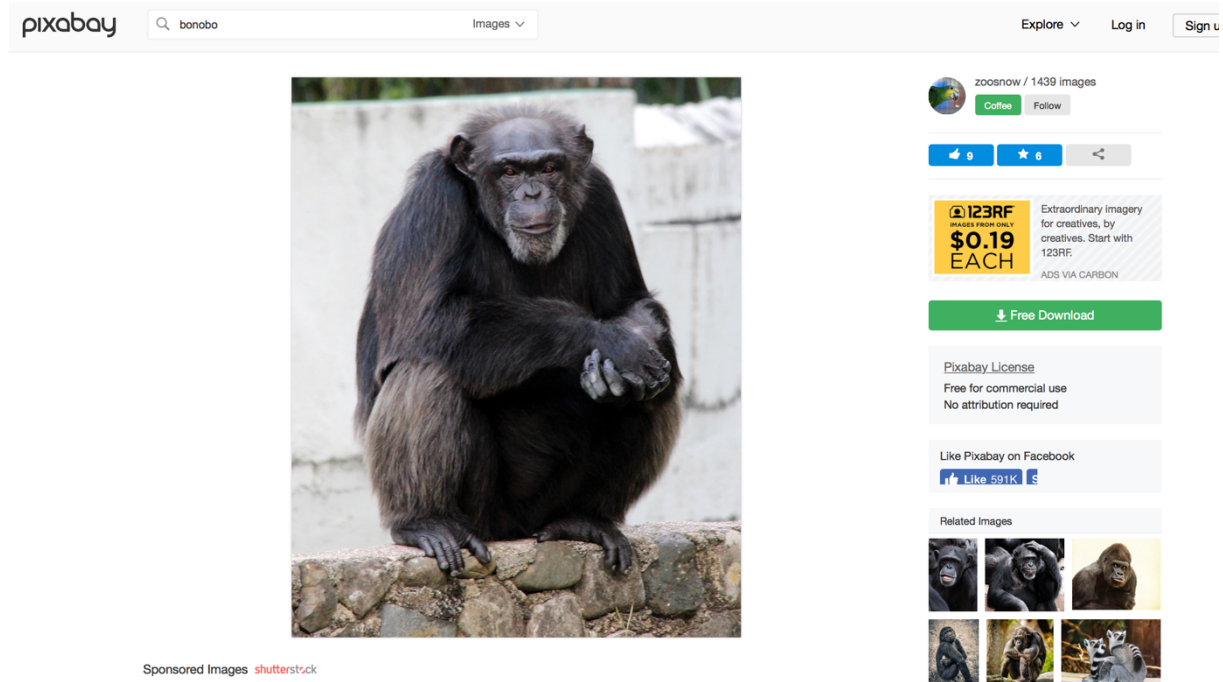
## 2. Lernphase Seite 7-12

### Seite 8

Stammbaumdarstellung durch LBS Autor S. Gemballa. Fotos Schädelmodelle durch LBS Autor S. Gemballa – wie angegeben. Weitere Fotos: Schimpanse und Turkana Boy:

Verwendungserlaubnis für Foto Schimpanse von

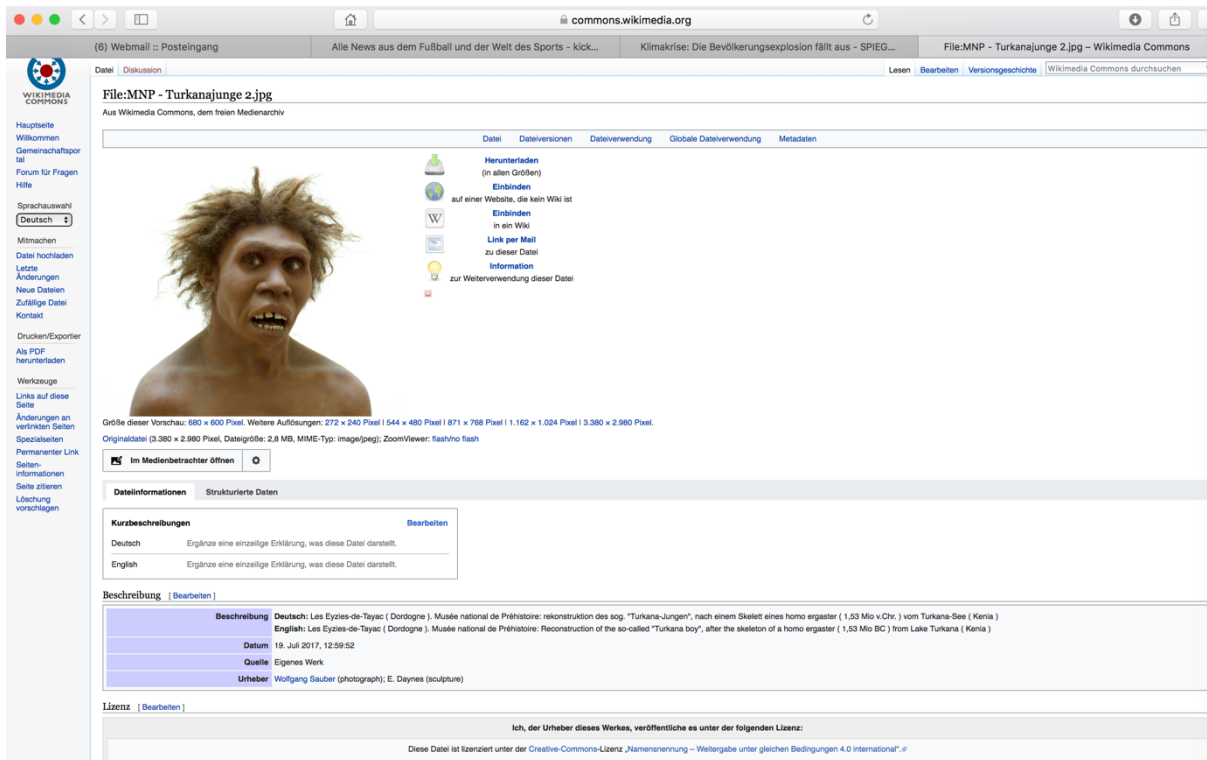
<https://pixabay.com/photos/chimpanzee-primacy-monkey-sitting-2007140/>



The screenshot shows a search result on the Pixabay website. The search term is "bonobo". The main image is a chimpanzee sitting on a stone ledge. To the right of the image is a sidebar with user information for "zoosnow / 1439 Images", a "Coffee" button, and a "Follow" button. Below this are social media icons for likes (9) and favorites (6). There is an advertisement for 123RF with a price of \$0.19 each. A green "Free Download" button is visible. Below the button is the Pixabay License information: "Free for commercial use, No attribution required". There is also a Facebook share button showing 591K likes. At the bottom, there are several "Related Images" thumbnails showing various chimpanzee photos.

Verwendungserlaubnis für Modell Turkana (Hergaster)

[https://upload.wikimedia.org/wikipedia/commons/a/a3/MNP\\_-\\_Turkanajunge\\_2.jpg?uselang=de](https://upload.wikimedia.org/wikipedia/commons/a/a3/MNP_-_Turkanajunge_2.jpg?uselang=de)



## Seite 9

Stammbaumdarstellung durch LBS Autor S. Gemballa. Fotos Schädelmodelle durch LBS Autor S. Gemballa – wie angegeben.

## Seite 10

Fotos Schädelmodelle durch LBS Autor S. Gemballa – wie angegeben.



## 3. Lernphase Seite 13-18

### Seite 14

Stammbaumdarstellung durch LBS Autor S. Gemballa. Weitere Fotos: Schimpanse und Turkana Boy: siehe Dokumentation zu Seite 8

### Seite 15

Stammbaumdarstellung durch LBS Autor S. Gemballa. Fotos Schädelmodelle durch LBS Autor S. Gemballa – wie angegeben.

### Seite 16

Verwendungserlaubnis für Karte Verbreitung Homo sapiens von

[https://commons.wikimedia.org/wiki/File:Spreading\\_homo\\_sapiens\\_la.svg](https://commons.wikimedia.org/wiki/File:Spreading_homo_sapiens_la.svg)


This work has been released into the public domain by its author, NordNordWest. This applies worldwide.

In some countries this may not be legally possible; if so:

NordNordWest grants anyone the right to use this work for any purpose, without any conditions, unless such conditions are required by law.

From Wikimedia Commons, the free media repository

File File history File usage on Commons File usage on other wikis Metadata



Download all sizes  
Use this file on the web  
Use this file on a wiki  
Email a link to this file  
Information about reusing

Size of this PNG preview of this SVG file: 800 × 376 pixels. Other resolutions: 320 × 150 pixels | 640 × 301 pixels | 1,024 × 481 pixels | 1,280 × 602 pixels | 851 × 400 pixels.  
Original file (SVG file, nominally 851 × 400 pixels, file size: 659 KB)  
This image rendered as PNG in other widths: 200px, 500px, 1000px, 2000px.


Open in Media Viewer

File information Structured data

Captions Edit

English Add a one-line explanation of what this file represents

Summary [ edit ]

Description	Deutsch: Ausbreitung des modernen Menschen English: Spreading of Homo sapiens Русский: Ранние миграции человека
Date	12 August 2014
Source	Spreading homo sapiens ru.svg by Ulutseg which based on Spreading homo sapiens.jpg by Altaleopard
Author	NordNordWest
Other versions	 Russian

This SVG file contains embedded text that can be translated into your language, using an SVG supportive editor (like XML or text). For more information see: About translating SVG files.

Licensing [ edit ]

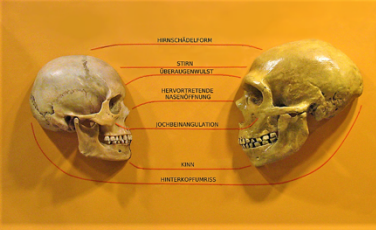
This work has been released into the public domain by its author, NordNordWest. This applies worldwide.  
In some countries this may not be legally possible; if so:  
NordNordWest grants anyone the right to use this work for any purpose, without any conditions, unless such conditions are required by law.

## Seite 17

Verwendungserlaubnis für Fot H sapiens H naenderthalensis Schädelvergleich von

[https://commons.wikimedia.org/wiki/File:Sapiens\\_neanderthal\\_comparison\\_de.png](https://commons.wikimedia.org/wiki/File:Sapiens_neanderthal_comparison_de.png)

File File History File usage on Commons File usage on other wikis Metadata



Download all sizes  
Use this file on the web  
Use this file on a wiki  
Email a link to this file  
Information about reusing

Size of this preview: 800 × 488 pixels. Other resolutions: 320 × 195 pixels | 640 × 390 pixels | 910 × 555 pixels.  
Original file (910 × 555 pixels, file size: 886 KB, MIME type: image/png)


Open in Media Viewer

File information Structured data

Captions [Edit](#)

English	Add a one-line explanation of what this file represents
---------	---

Summary [\[ edit \]](#)

<b>Description</b>	English: Comparison of Modern Human and Neanderthal skulls from the Cleveland Museum of Natural History with German captions. Description (from up to down): Braincase shape, Forehead, Browridge, Nasal bone projection, Cheek bone angulation, Chin, Occipital contour. Deutsch: Vergleich von Homo-Sapiens- und Neanderthal-Schädel im Naturgeschichtlichen Museum in Cleveland mit deutscher Beschriftung. Legende (von oben nach unten): Hirschädelform, Stirn, Überaugenwulst, Hervortretende Nasenöffnung, Jochbein-Angulation, Kinn, Hinterkopfumriss.
<b>Date</b>	15 November 2008 (original photo)
<b>Source</b>	<a href="https://www.flickr.com/photos/hmh/3033749380/">https://www.flickr.com/photos/hmh/3033749380/</a> (original photo)
<b>Author</b>	hairymuseummatt (original photo), KaterBegemot (derivative work)
<b>Other versions</b>	 Blank version

Licensing [\[ edit \]](#)

This file is licensed under the [Creative Commons Attribution-Share Alike 2.0 Generic](#) license.

You are free:

- to **share** – to copy, distribute and transmit the work
- to **remix** – to adapt the work

Under the following conditions:

- attribution** – You must give appropriate credit, provide a link to the license, and indicate if changes were made. You may do so in any reasonable manner, but not in any way that suggests the licensor endorses you or your use.
- share alike** – If you remix, transform, or build upon the material, you must distribute your contributions under the [same or compatible license](#) as the original.