

Lösungsblatt für Arbeitsanleitung Jahreszeiten

Hier kannst du schauen, ob du alles richtig gemacht hast

Viel Glück!

Lösungsblatt



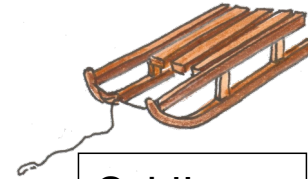
Pullover



Schlittschuh



Adventskranz



Schlitten



Schneemann



Nikolaus



Ski



Mütze



Engel



Skifahren



Schal



Schneewolke



Schneeschippe



Lebkuchen



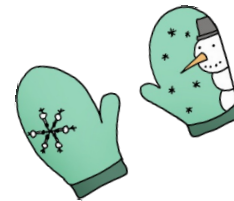
Krippe



Winter



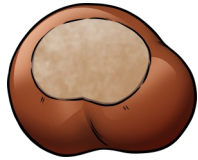
See



Handschuhe



Nikolausstiefel



Kastanie



Sankt Martin



Wind



Drachen



Kürbis



Vogelscheuche



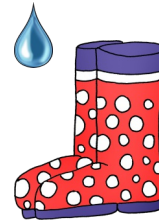
Pfütze



Blätter



Regen



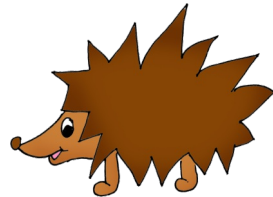
Gummistiefel



Getreide



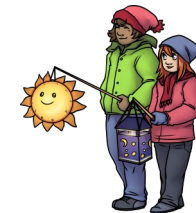
Herbst



Igel



Erntedank-Korb



Laterne laufen



Seestern



Kinder am Strand



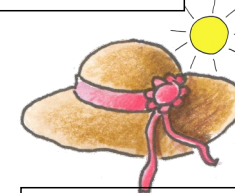
Badeanzug



Sonnencreme



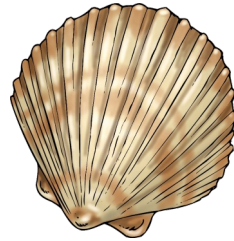
Sonnenblume



Sonnenhut



Shirt



Muschel



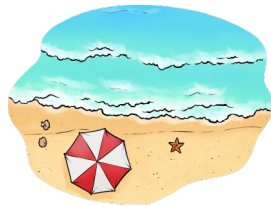
Flip Flops



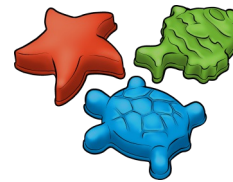
Sonnenbrille



Eis



Strand



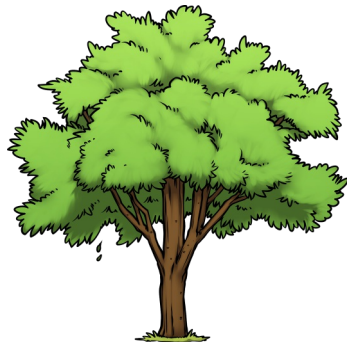
Sandförmchen



Liegestuhl



Planschbecken



Sommer



Kinder im Wasser



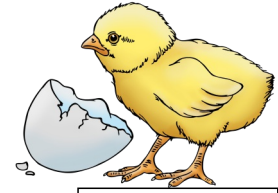
Maiglöckchen



Osternest



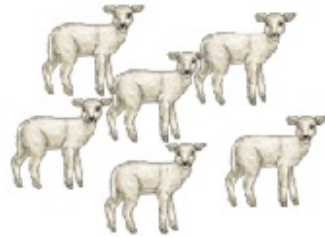
Tulpe



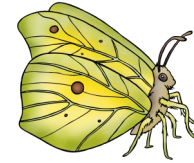
Küken



Osterei



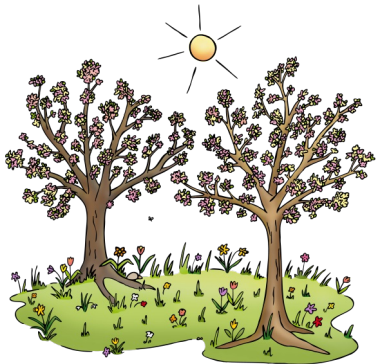
Lämmer



Schmetterling



Biene



Frühling



Narzisse



Storch



Osterhase



Marienkäfer